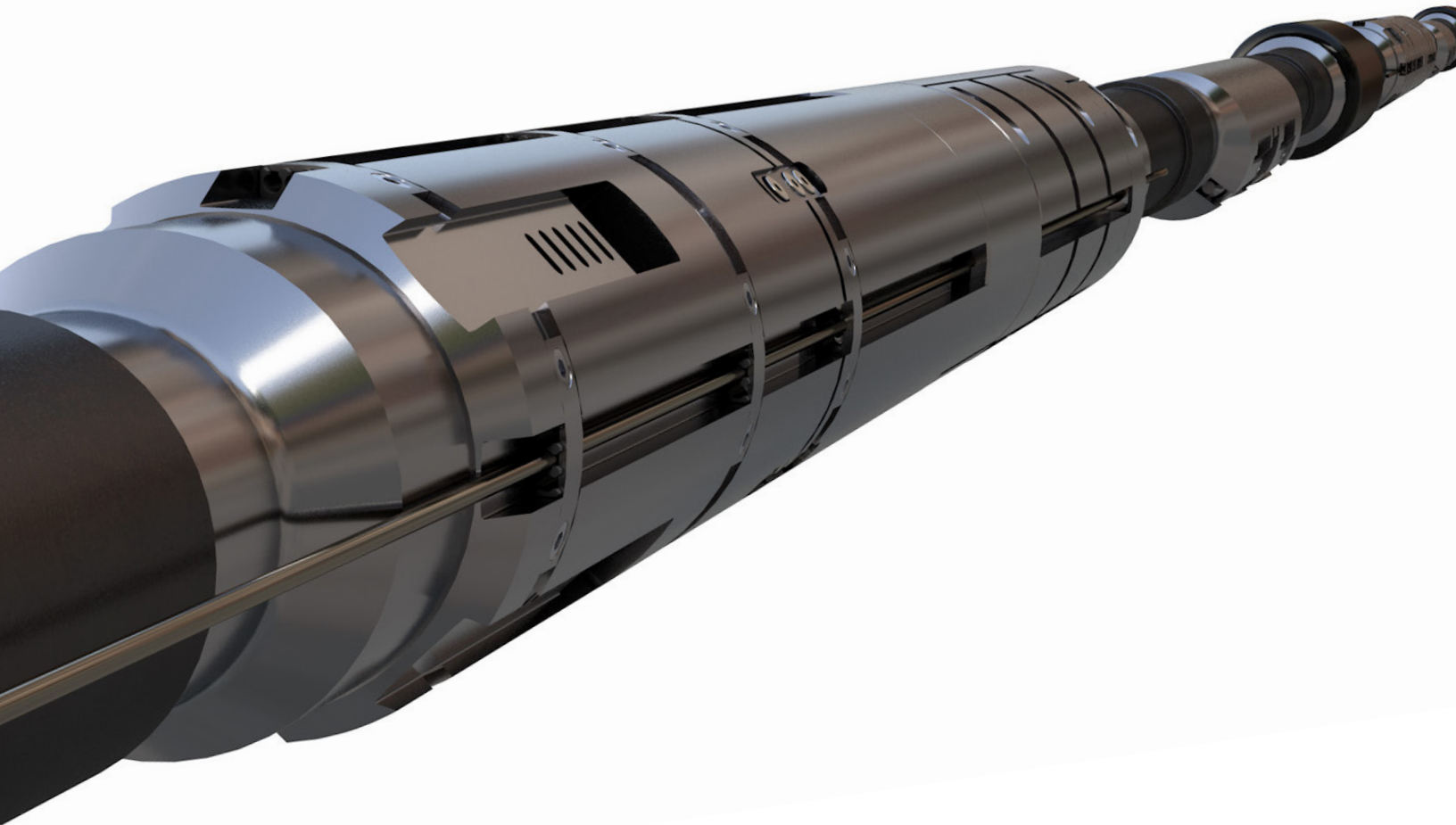




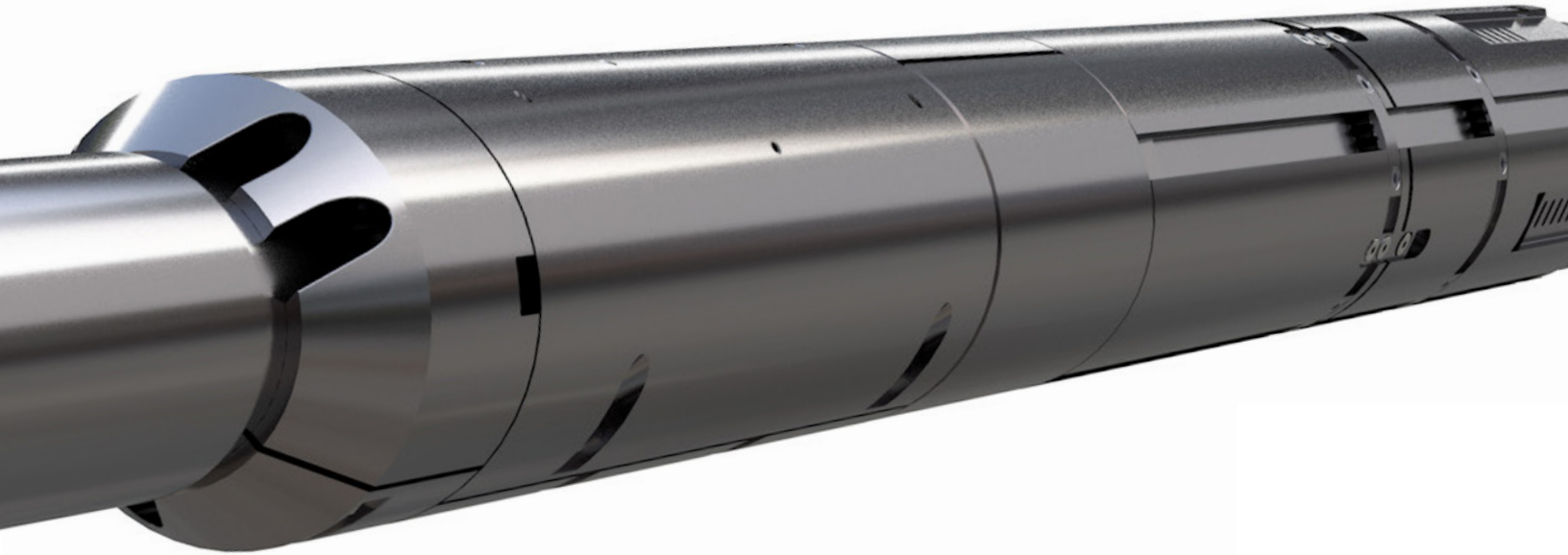
A new era of SmartWell[®] technology

The same exceptional performance and reliability, but now with optimum response, modularity, digital insight, and reservoir control

Experience The Future of Completions[®]



True reservoir management driven by actionable data insights



SmartWell® Turing™

Electro-hydraulic control system

- Improved system response
- Increase reservoir contact
- Rig time savings
- Contingency mechanical override
- Modularity and scalability
- Simplify your completion architecture
- Full tubing bore for production/injection
- Move between any choking position and in any direction with a single step
- Simple integration of wellbore data and flow allocation for optimized control



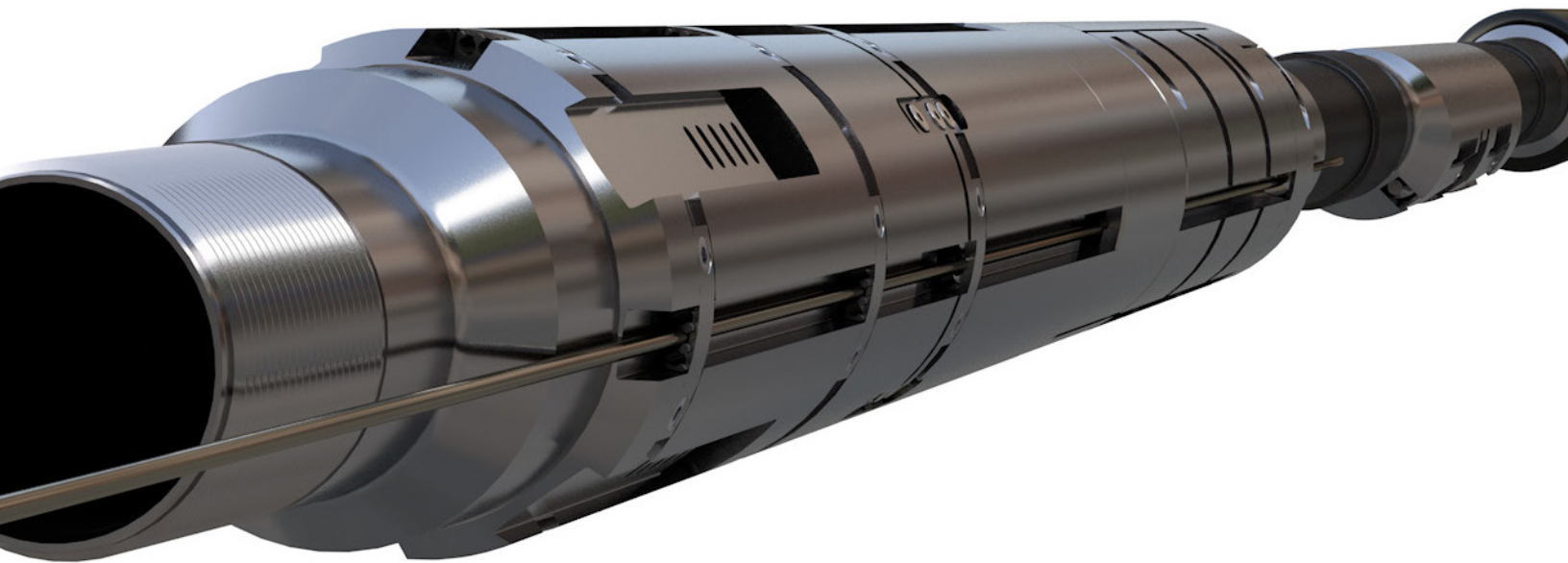
Clariti® digital reservoir management platform
An integral part of the eCompletions® ecosystem



SmartWell® Volta™

All-electric control system

- Mitigate production uncertainty
- Understand your zonal contribution
- Minimize costs per BOE
- Single electrical line to control multiple zones
- Use for injection or production
- Coordinated control and monitoring capabilities for workflow automation and fieldwide insights



View

Visualize Downhole Data with Alarming



Flow

Accurate Virtual Downhole Flow Allocation



React

Well Management with Automated Workflows



Manage

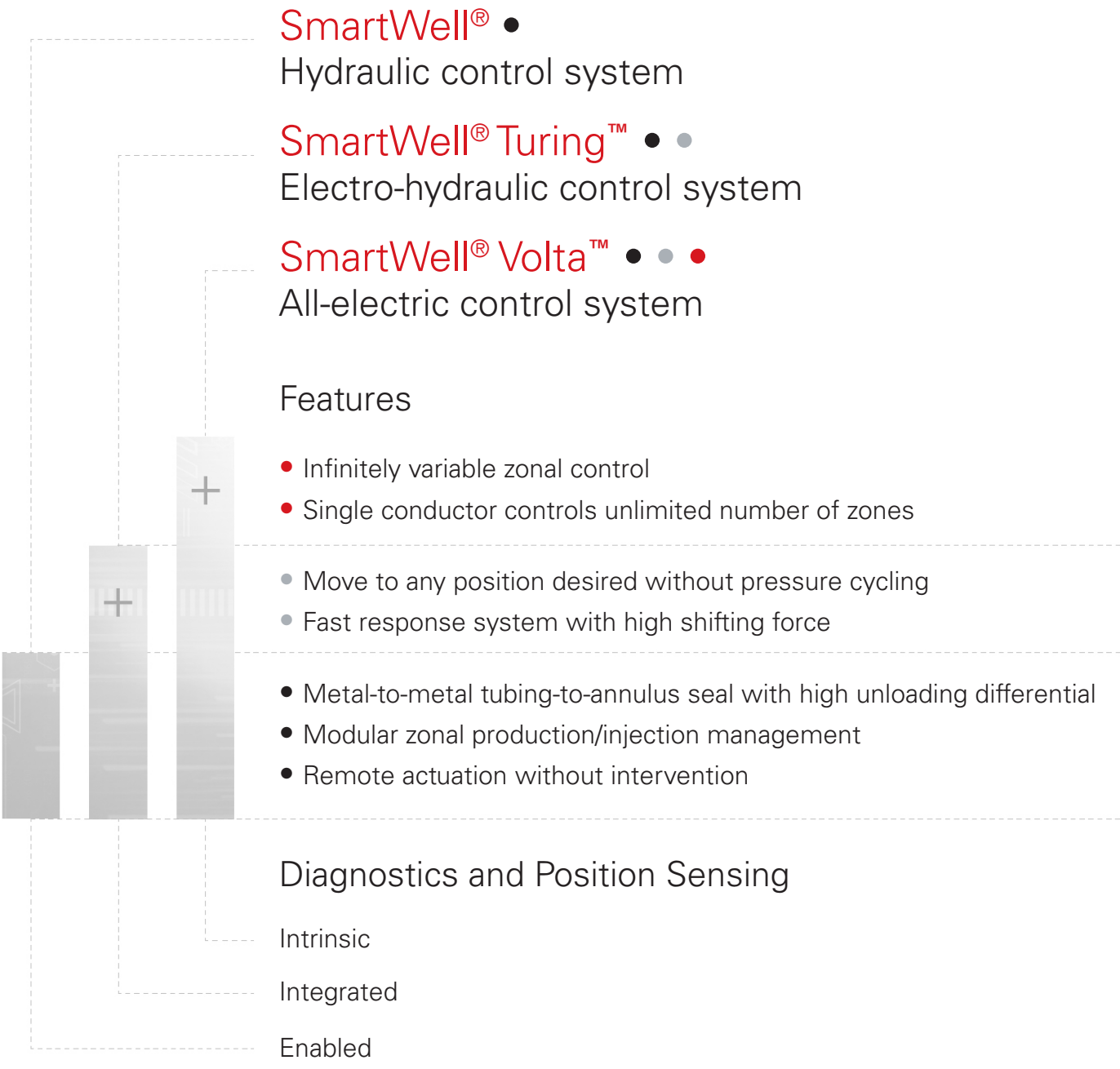
Visualize Downhole Data with Alarming



Predict

Active Management with SmartWell® Systems

Purposed technology for your reservoir





For more information, contact your local Halliburton representative or visit us on the web at www.halliburton.com

Sales of Halliburton products and services will be in accord solely with the terms and conditions contained in the contract between Halliburton and the customer that is applicable to the sale.

H013649 01/25 © 2025 Halliburton. All Rights Reserved.

halliburton.com

HALLIBURTON